



Accurately Identifying Bed Bugs

Amazingly, just ONE is needed to jump start a massive bed bug infestation!

- ✓ 5 life cycles take place before becomes an adult
- ✓ In order to grow, they take a blood meal then molt (shed skin) to the next life stage.
- ✓ 4 Weeks - 5 Months Depending on Conditions



Early stage, translucent in color



Shedding of exoskeleton



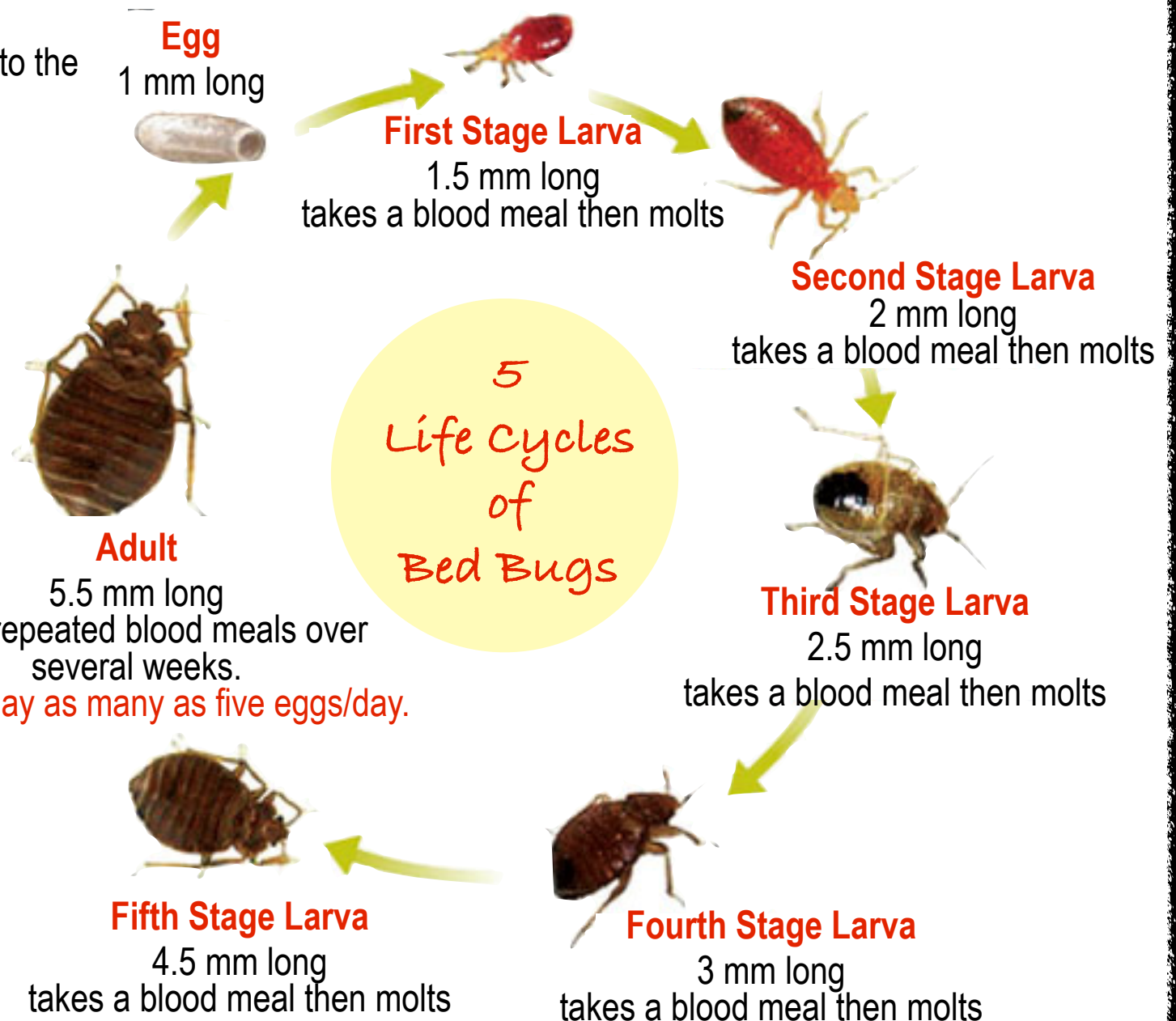
Eggs, nymphs, bed bugs and fecal material



Oval shaped and reddish-brown in color when adult



Adults are the size of an "apple seed" for size comparison



Top Ten Questions

- ✓ Is it yellowish white or reddish brown in color?
- ✓ Is it flattened with obvious folds on it's body?
- ✓ Is the bug no bigger than a pencil eraser?
- ✓ Is the bug round or oval in shape?
- ✓ Is the bug wingless?
- ✓ Does it have 6 legs and short thick antennae?
- ✓ Does it have a well defined, protruding eyes?
- ✓ Does it have a leathery skin with small fine hairs?
- ✓ Does it have a round end with no tail-like appendages?
- ✓ Was it found in the sleeping or sitting area?

If answers are **"YES"**, then it is a Bed Bug



Hair on a Bed Bug



Activity on a Mattress



Yellowish-white, but you can see the blood as it feeds



Bed Bug Waste on a Mattress



Before Eating

Flat like paper.



After Eating

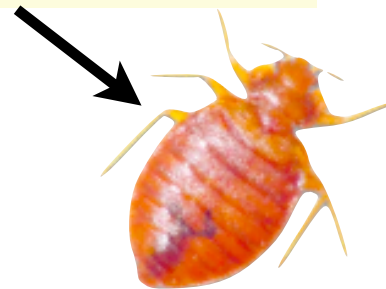
"Bloated", elongated & darker red. Bright red appearance if fed within the last few hours*.



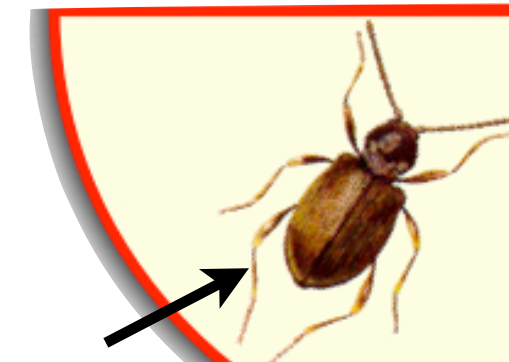
* It will darken and flatten again over next couple of days as it digests the blood meal.

Similar Looking Bugs

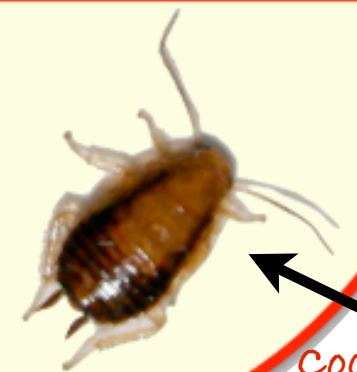
Adult Bed Bug



Carpet Beetle



Spider Beetle



Cockroach nymph



THE OHIO EXTERMINATING COMPANY

614-294-6311

OHIOEXTERMINATING.COM